

froling 



THE NEW FIREWOOD  
**FKE aqua**  
fireplace insert.



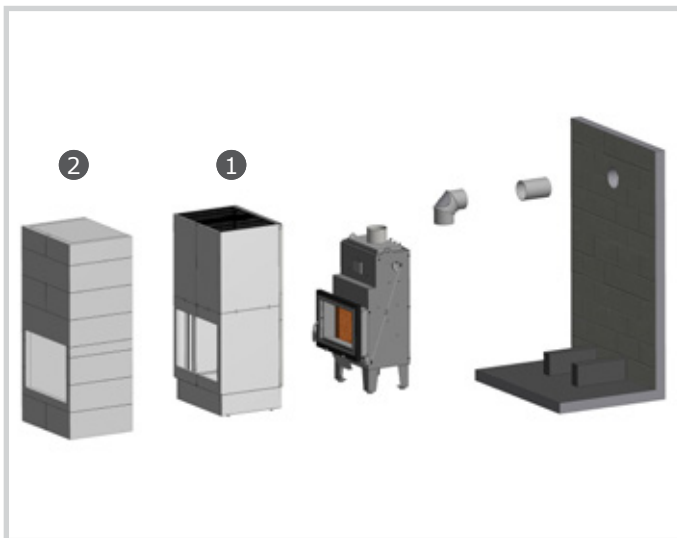


## THE NEW FIREWOOD

# FKE aqua fireplace insert.

The NEW FKE aqua aquiferous firewood fireplace insert by boiler specialist Fröling sets new standards. The FKE aqua keeps your living room nice and cosy while creating a wonderful atmosphere with its visible flame. The fireplace insert can be customised at a later stage thanks to ready-made shroud. The shroud (1) can, for example, be clad with natural stone, flagstones or tiles (2) or plastered according to taste. The FKE aqua can also be custom bricked so that the style options (3) for your personal living space are virtually boundless.

Firewood of up to 1/3 metre (8 kW) or 1/2 metre (17 kW) can be added through the large viewing window with self-closing door (hinge optional on left or right). Approx. 80% of the heat energy obtained is fed to the storage tank and then on to the heating system. A solar panel system can also be added via a solar layered tank. All water connections as well as the external combustion air are easy to access at the bottom. Efficiency rates are in excess of 84%.



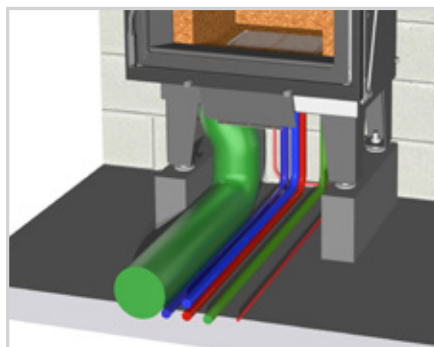
Structure diagram of **FKE aqua** with ① ready-made shroud and ② design suggestion (flagstones).



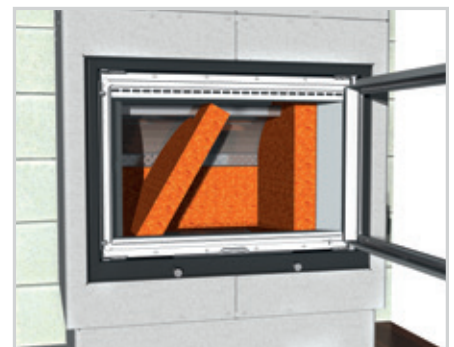
**FKE aqua** with custom brickwork and design.



Large viewing window with self-closing door (hinge optional on right or left).



Connections for flow, return, fresh-water pipe (thermal discharge safety device), drain.



Can easily be upgraded to 17 kW.

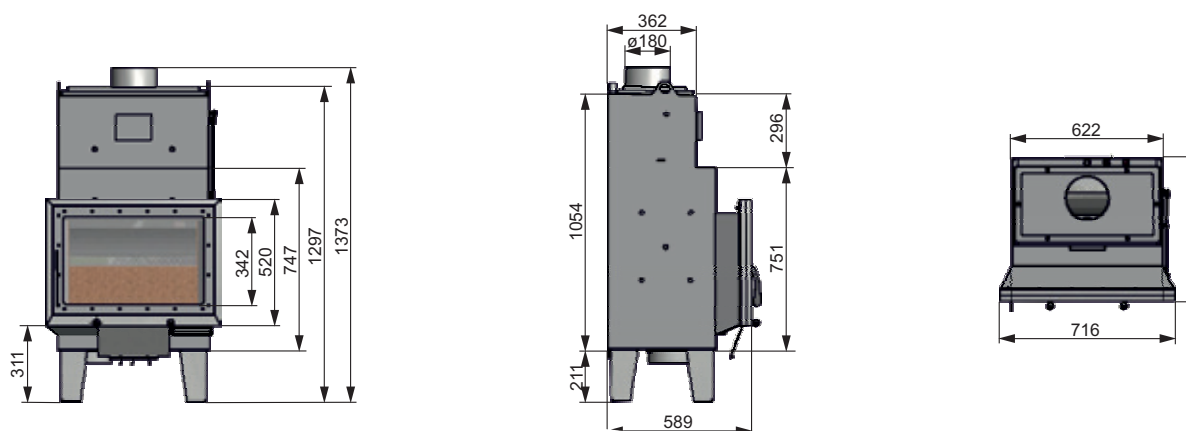




**Examples for the custom design of your living space:**



# Technical specifications



| FKE aqua fireplace insert - performance data |        | 8       | 17      |
|--|--------|---------|---------|
| Nominal output                               | kW     | 8       | 17      |
| water side                                   | kW     | 6.3     | 13.0    |
| radiant heat side                            | kW     | 1.7     | 4.0     |
| Max. Firewood length                         | m      | 1/3     | 1/2     |
| Boiler water capacity                        | litres | 70      | 70      |
| Weight                                       | kg     | 235     | 235     |
| Max. Operating pressure                      | bar    | 3       | 3       |
| Permitted flow temperature                   | °C     | 90      | 90      |
| Width  | mm     | 716     | 716     |
| Depth  | mm     | 589     | 589     |
| Height                                       | mm     | 1373    | 1373    |
| Boiler outfeed/return (sleeve)               | Inches | 3/4"    | 3/4"    |
| Data for planning the flue gas system        |        | 8       | 17      |
| Flue gas temperature                         | °C     | 160     | 190     |
| Flue gas mass flow                           | kg/h   | 31      | 50.4    |
| Feed pressure required                       | Pa     | 10 - 15 | 10 - 15 |
| Flue spigot diameter                         | mm     | 180     | 180     |

Your Froling partner:

**froling** 

**Heizkessel- und Behälterbau GesmbH  
A-4710 Grieskirchen, Industriestr. 12**

AUT: Tel +43 (0) 7248 606 • Fax +43 (0) 7248 606-600  
GER: Tel +49 (0) 89 927 926-0 • Fax +49 (0) 89 927 926-219  
E-mail: [info@froeling.com](mailto:info@froeling.com) • Internet: [www.froeling.com](http://www.froeling.com)

All illustrations intended as a guide only.  
We reserve the right to make technical changes without prior notice.  
Errors and omissions excepted.