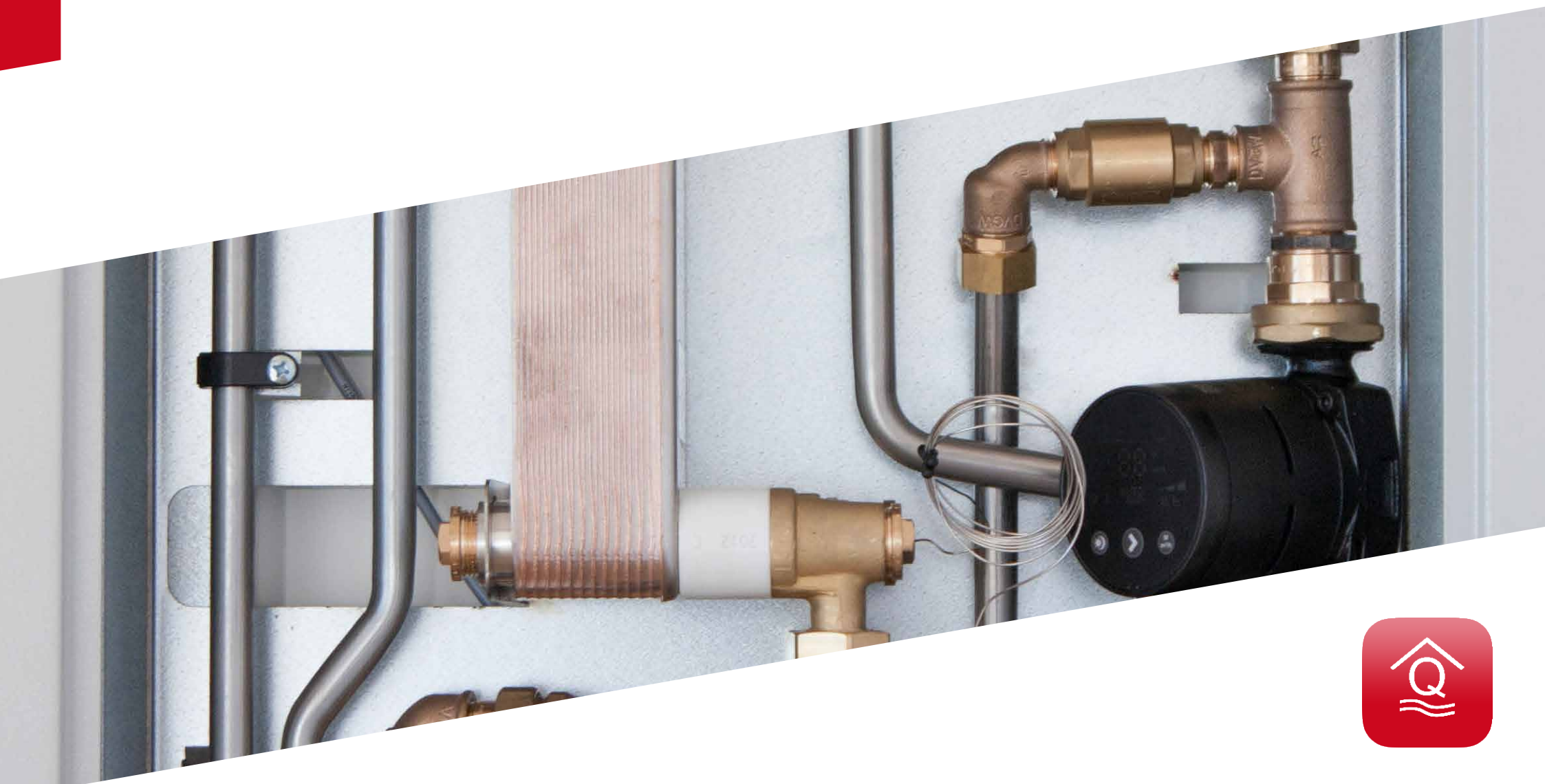


BUSINESS DIVISION HOME STATIONS

*Sophisticated and user-friendly solutions for
heat and water transfer*



TAKING THE LEAD. NOW.



Legal notice:

aqotec GmbH
Vocklatz 35, 4890 Weißenkirchen im Attergau, Österreich
Telefon: +43 7684 20400, Fax: +43 7684 20400 100
office@aqotec.com, www.aqotec.com

Reprints or reproduction, even extracts, only with permission from aqotec GmbH, 4890 Weißenkirchen, Austria. Subject to technical changes and errors. Included performance diagrams, statements and tables are exclusively to facilitate understanding. They have no bearing on our complete and current product portfolio and thus do not form a basis for planning. The images used as examples sometimes include special custom equipment. The manufacturer and type of components shown may vary. This document does not contain any catalogue goods. The units are partially planned, designed and manufactured according to customer specifications. A short waiting time must be expected. Photos: aqotec gmbh; fotolia.com



Individual heat for every home

The “aqoLoft” home station is supplied as a compact, pre-configured unit. It delivers heat and hot water to every home. The entire unit is made of stainless steel tubes and mounted on a base plate, which is then housed in a painted steel cabinet. Therefore, the home station can be installed in just a few minutes, and its cables easily connected.

The broad output range ensures optimal adjustment to the desired hot water comfort. Its simple and straightforward control allows user and installer operation with limited prior knowledge.



Heat exchangers

Consistent prevention of performance-reducing calcium deposits thanks to heat exchanger design and arrangement. The large heat exchanger allows high tapping volumes at very low flow temperatures, while ensuring low return temperatures.

Cold water meter (optional)

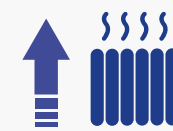
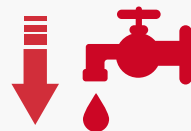
The built-in cold water meter, in combination with the heat measuring device, allows accurate billing on every home.

Revolutionary aqoCTR regulation

Foregoing proportional-volume controllers simplifies maintenance tasks for users and installers. The large surface of the highly sensitive, stainless steel spiral-sensor enables a continuous flow temperature adjustment (20° C to 70° C), thus ensuring lightning-fast water supply with a pleasant warmth distribution. The **ComfortThermoR**egulation of aqotec (aqoCTR) redefines hot water and heating supply.

Accurate energy metering and billing (optional)

Accurate metering from first use, simultaneous start-up with the home station, and zero co-ordination and installation effort. Compatible with nearly all meter brands or usable with just an adaptor. Unbeatable when combined with aqotec's visualisation and billing software.



Clear toolbar for easy assignment of home station connection cables.

The benefits are obvious ...

- ✓ Easy handling via lightning-fast and patented aqoCTR regulation
- ✓ No summer bypass required by "keeping the heat exchanger warm"
- ✓ Flat and extremely maintenance-friendly design
- ✓ Heat generator independent
- ✓ Very low supply and return temperatures (upper temperature difference of $\sim 4^{\circ}\text{C}$)
- ✓ Reduced maintenance costs thanks to advanced and reliable technology
- ✓ Easy start-up
- ✓ Infinite flow temperature adjustment (20°C to 70°C)
- ✓ Very low pressure drop
- ✓ Low cold-water pressure required
- ✓ How water temperature for summer mode is sparingly regulated
- ✓ Reliable system separation (no mixing of water and heating medium)

Benefits for

HOMEOWNERS / RENTERS

- ✓ Up to 20% lower heat charges compared to central water heating.
- ✓ Excellent hot water comfort.
- ✓ Outstanding water hygiene and safety against dangerous Legionella bacteria.
- ✓ High availability: Consumers can independently decide when and how much they would like their heating to work.
- ✓ Steady and precise consumption control by heat quantity and cold water meter

Benefits for

OPERATORS / INVESTORS

- ✓ System operation in full compliance with applicable regulations including Drinking Water Ordinance and DVGW worksheet 551.
- ✓ Future-proof: No structural or technical changes required in the residence when changing energy source.
- ✓ Investment benefits: Significant reduction of heat charges allows growth of net rental income.
- ✓ Funding opportunities through community and government programs
- ✓ Suitable for operation with low temperature producers (e.g., heat pumps)



<i>Technical data Home stations</i>	<i>aqoLoft DHK</i>				<i>aqoLoft GHK</i>				<i>aqoLoft GHK-FBH</i>				<i>aqoLoft WW</i>			
Heating side																
Heating output (b. 20K spread) [kW]	12				12				12				-			
Supply-side pressure loss [bar]	0.1	0.2	0.3	0.75	0.1	0.2	0.3	0.75	0.1	0.2	0.3	0.75	0.1	0.2	0.3	0.75
Max. operating temperature	90° C				90° C				90° C				90° C			
Max. operating pressure	PN 10				PN 10				PN 10				PN 10			
Drinking water supply																
Hot water output [kW]	25	35	44	61	25	35	44	61	25	35	44	61	25	35	44	61
Max. operating temperature	90° C				90° C				90° C				90° C			
Max. operating pressure	PN 10				PN 10				PN 10				PN 10			
Max. draw-off rate (60-20 / 10-45 ° C) [l/min]	10	14	18	25	10	14	18	25	10	14	18	25	10	14	18	25
Dimensions W / H / D (mm)																
Flush-mounted casing	604 / 976-1066 / 156-190*				604 / 976-1066 / 156-190*				604 / 1506-1596 / 155-190*				604 / 976-1066 / 156-190*			
Surface-mounted casing	575 / 960 / 155				575 / 960 / 155				-				575 / 960 / 155			
Weight	42 kg				54 kg				66 kg				23 kg			
* Height-adjustable, exclusive differential pressure regulator, heat quantity and cold water meter																



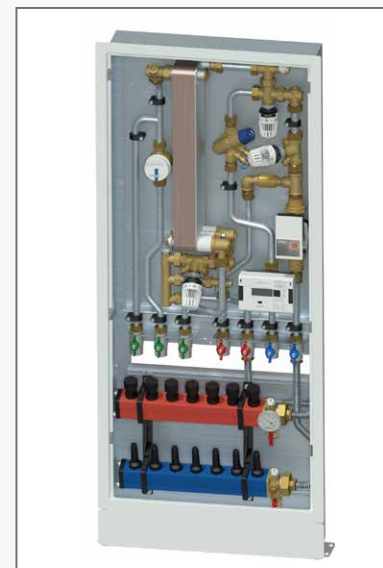
aqoLoft as flush-mounted casing



aqoLoft DHK for a direct heating circuit



aqoLoft GHK for a mixed heating circuit



aqoLoft GHK-FBH for underfloor heating



aqoLoft WW for pure water heating

<i>Technical data Home stations</i>	<i>aqoLoft Highline DHK</i>			<i>aqoLoft Highline GHK</i>			<i>aqoLoft Highline GHK-FBH</i>			<i>aqoLoft Highline WW</i>		
Heating side												
Heating output (b. 20K spread) [kW]	12			12			12			-		
Max. operating temperature	90° C			90° C			90° C			90° C		
Max. operating pressure	PN 10			PN 10			PN 10			PN 10		
Drinking water supply												
Hot water output [kW]	61	73	85	61	73	85	61	73	85	61	73	85
Max. operating temperature	90° C			90° C			90° C			90° C		
Max. operating pressure	PN 10			PN 10			PN 10			PN 10		
Max. draw-off rate (60-20 / 10-45 ° C) [l/min]	25	30	35	25	30	35	25	30	35	25	30	35
Dimensions W / H / D (mm)												
Flush-mounted casing	754 / 1026-1116 / 161-196*			754 / 1026-1116 / 161-196*			754 / 1566-1656 / 161-196			604 / 1076-1166 / 177-212*		
Surface-mounted casing	715 / 1000 / 165			715 / 1000 / 165			-			575 / 1050 / 180		
Weight	34	38,5	40,8	34	38,5	40,8	34	38,5	40,8	34	38,5	40,8
* Height-adjustable, exclusive differential pressure regulator, heat quantity and cold water meter												

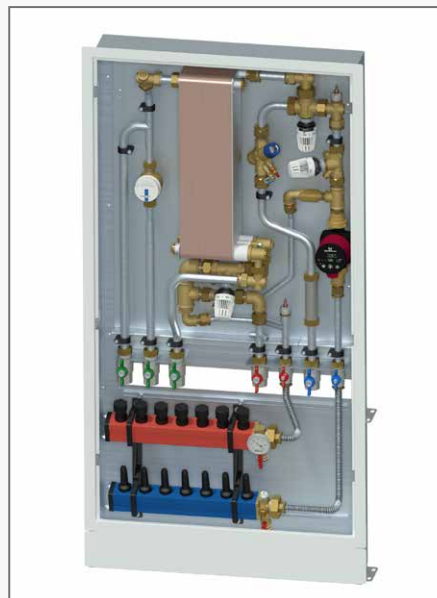
* Height-adjustable, exclusive differential pressure regulator, heat quantity and cold water meter



aqoLoft DHK Highline
for a direct heating circuit



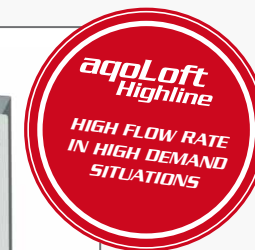
aqoLoft GHK Highline
for a mixed heating circuit



aqoLoft GHK-FBH Highline
for underfloor heating



aqoLoft WW Highline
for pure water heating



aqoLoft
DHK

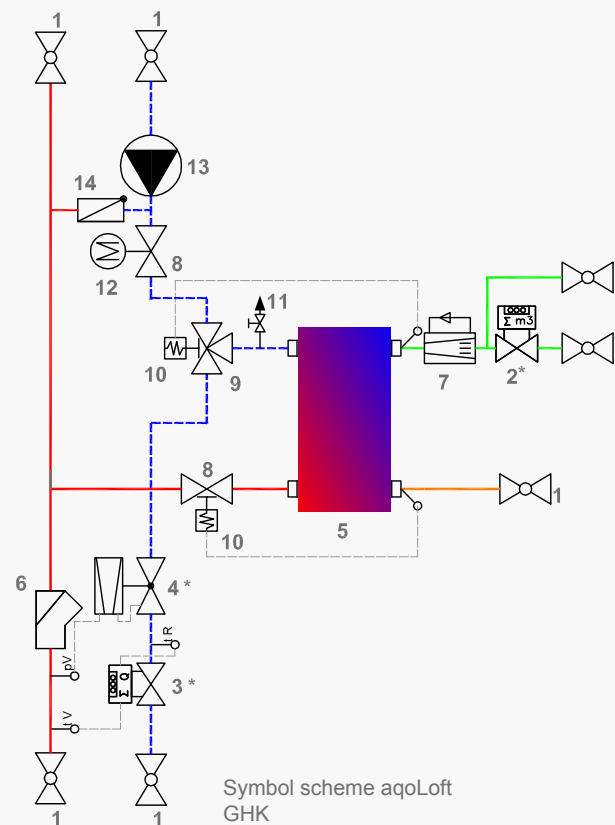
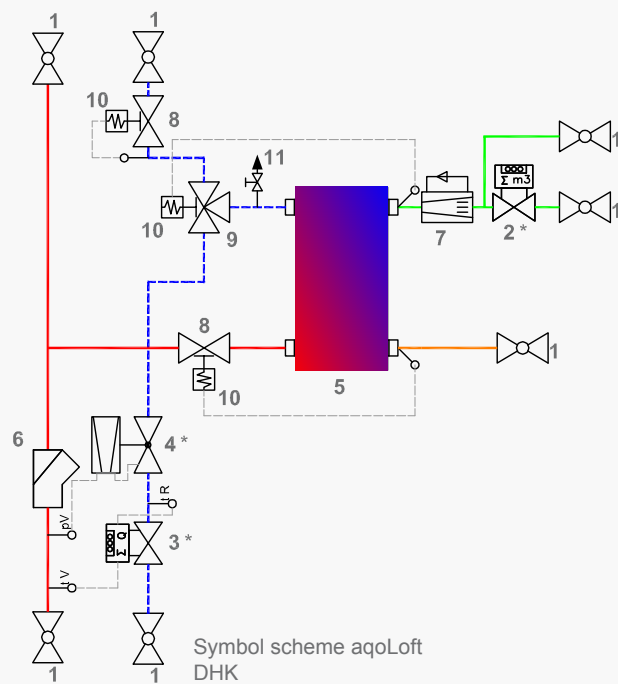
draw-off rate up
to 35l / min.

aqoLoft
GHK-FBH

Operation with
radiators as well
as underfloor
heating.

Heating boilers,
heat pump,
district heating, ...





Key:

- 1 Ball valve
- 2 Watermeter*
- 3 Heat flow meter*
- 4 Differential pressure regulator*
- 5 Plate heat exchanger
- 6 Dirt trap
- 7 Volume restriction
- 8 Straight way valve
- 9 3-way mixing valve
- 10 Temperature regulator
- 11 Ventilate
- 12 Actuator
- 13 Circulation pump
- 14 Check valve

*Optional





**BUSINESS UNIT
SMALL AND LARGE UNITS**

compact district heating transfer stations,
individually designed to meet customer
requirements



**BUSINESS UNIT
HOME STATIONS**

sophisticated and user-friendly solutions
to transfer heat and water



**BUSINESS UNIT
CONTROL TECHNOLOGY**

Intuitive tools for network and special station
controls for best heat operation



**BUSINESS UNIT
PLANNING & ENGINEERING**

Solutions for heat generation - from the idea
right through to commissioning



**BUSINESS UNIT
CONTROL AND COMMUNICATION TECHNOLOGY**

perfect energy management from the point of power
generation to the billing of heat customers



**BUSINESS DIVISION
ENERGY MANAGEMENT AND AUDIT**

Total solutions for the optimisation of heat
distribution and supply



**BUSINESS UNIT
SPECIAL PLANT ENGINEERING**

Heat solutions perfectly matched –
according to the wishes of the customer



**BUSINESS UNIT
DHW SOLUTIONS**

compact, high-performance solutions for
DHW heating



Austria

aqotec GmbH
Vöcklatal 35
4890 Weißenkirchen i. Attg.

T +43 7684 20 400
F +43 7684 20 400 100

South Tyrol

aqotec GmbH
Klosterweg 30
39035 Welsberg (BZ)

T +39 474 85 69 42
F +39 474 94 46 31

Czech Republic

aqotec s.r.o.
U Sladovny 425
67125 Hodonice

T +420 515 294 462
F +420 515 230 624

France

aqotec France
8, rue du Rempart
68000 Colmar

T +33 389 23 73 19

Germany

aqotec Consulting GmbH
Otto-Hahn-Straße 13b
85521 Riemerling/Ottobrunn

T +49 89 608 755 58
F +49 89 608 755 59

Poland

aqotec Polska Sp. z o.o.
ul. Urzędnicza 26 lok. 1
30051 Kraków

T +48 791 029 103
F +43 699 18 58 77 81

Italy

aqotec Italia s.r.l.
via della Mendola 48
39100 Bolzano

T +39 345 463 68 26

